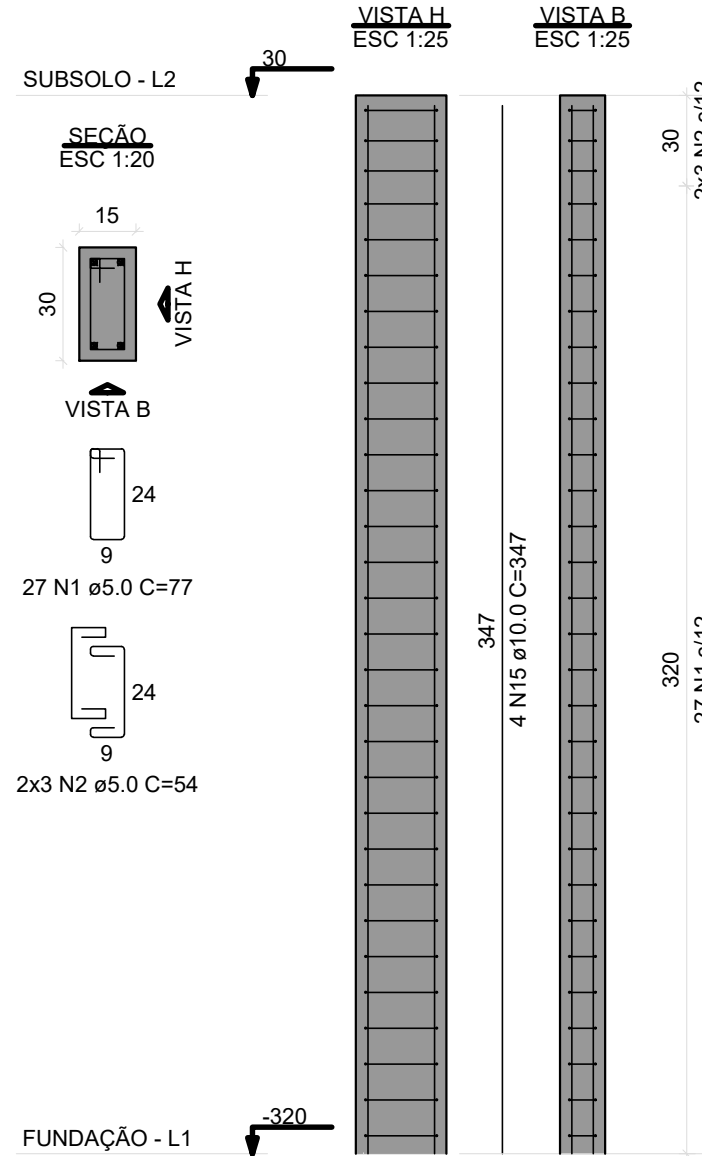
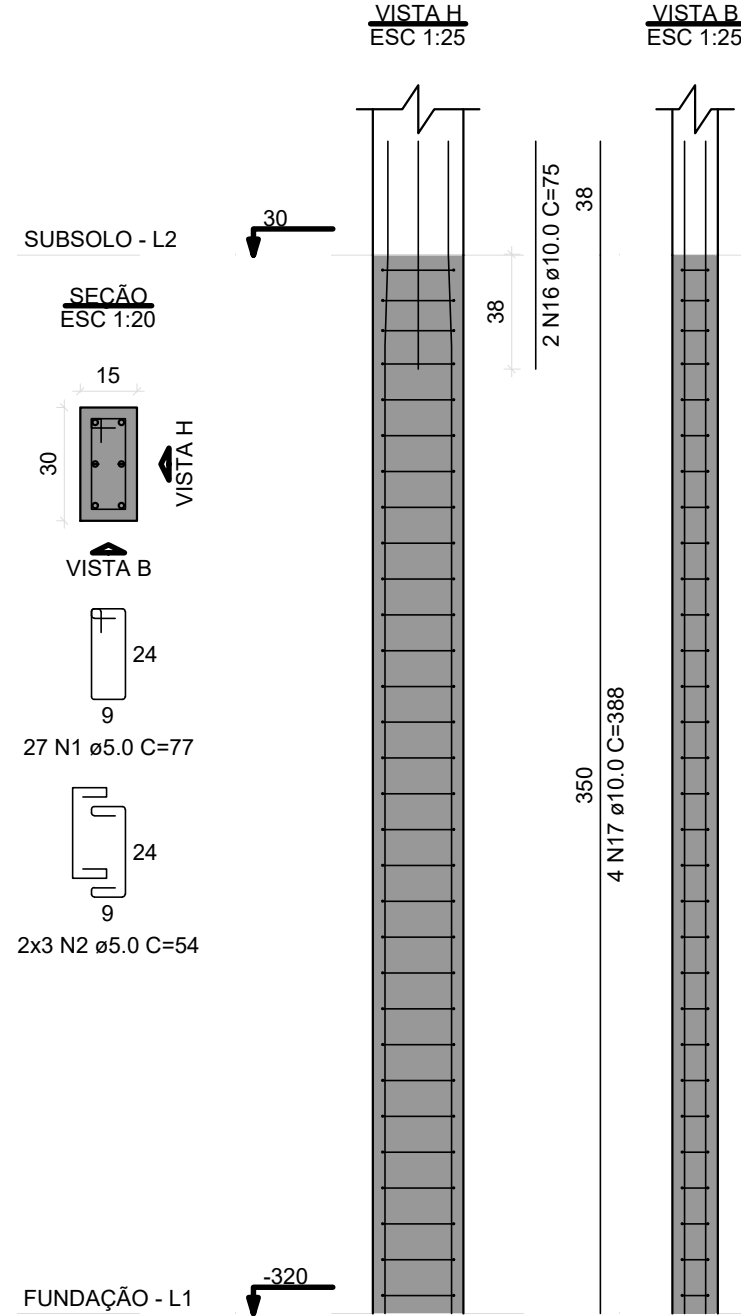


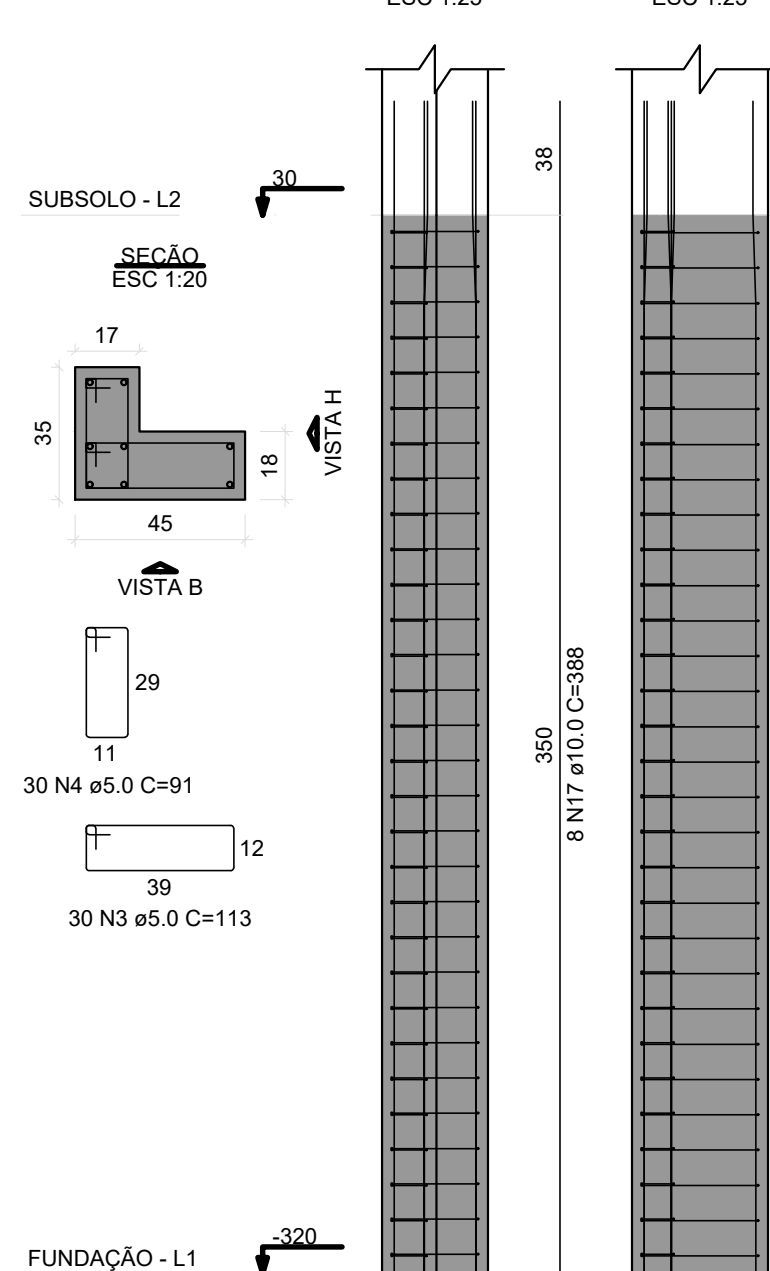
P1=P2=P3=P4=P5=P6=P7=
=P8=P9



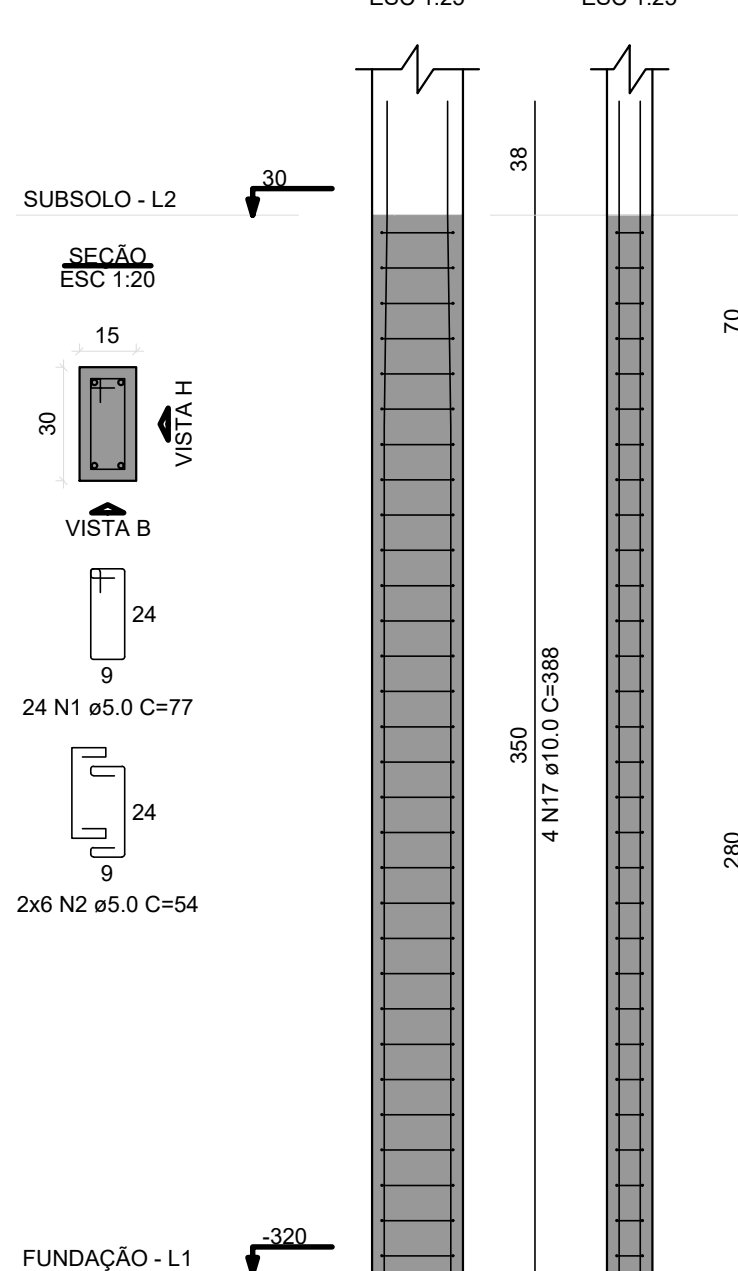
P10=P12=P14=P16=P32



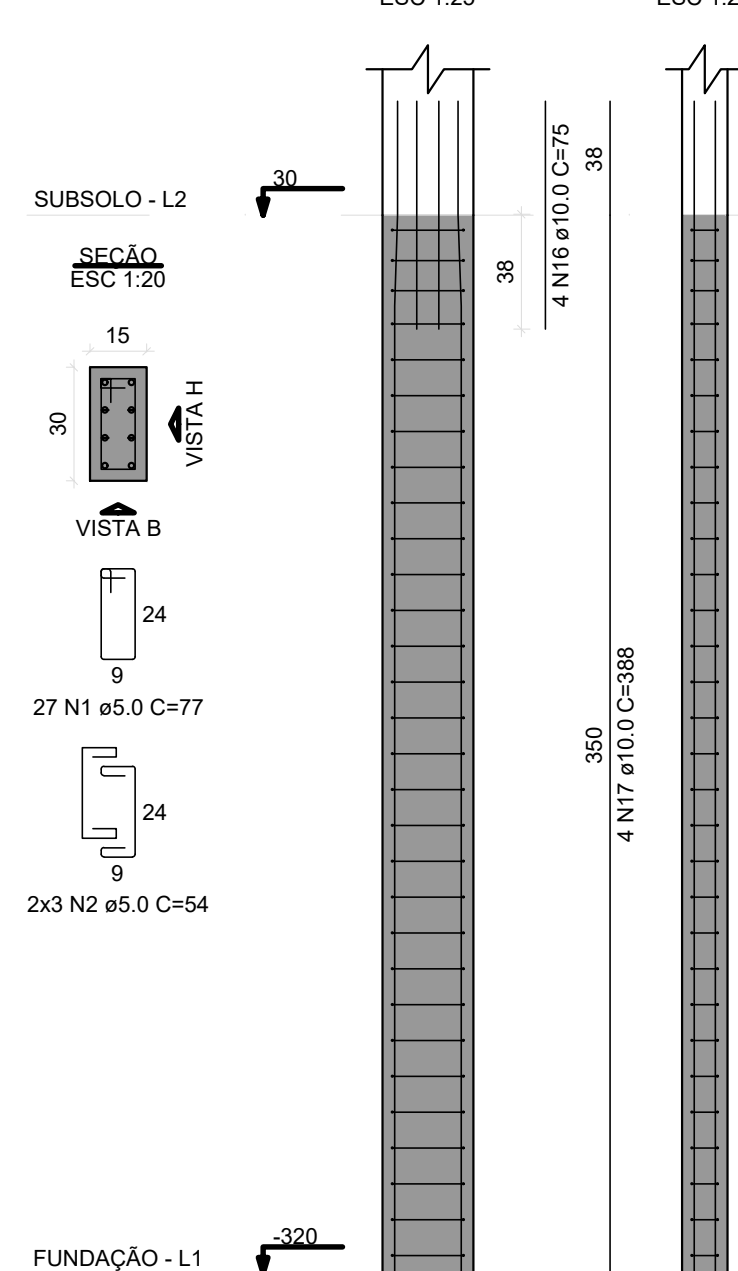
P11



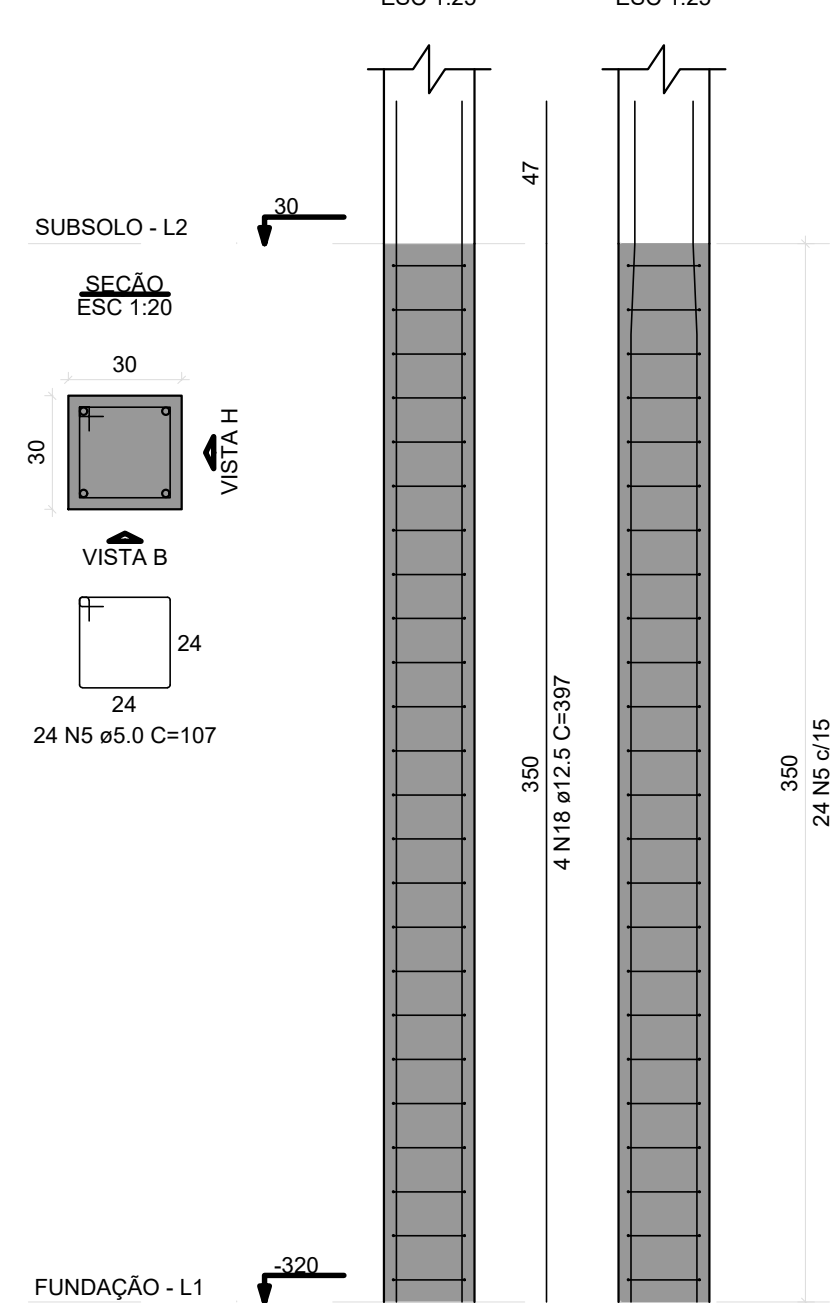
P13=P17



P15



P18

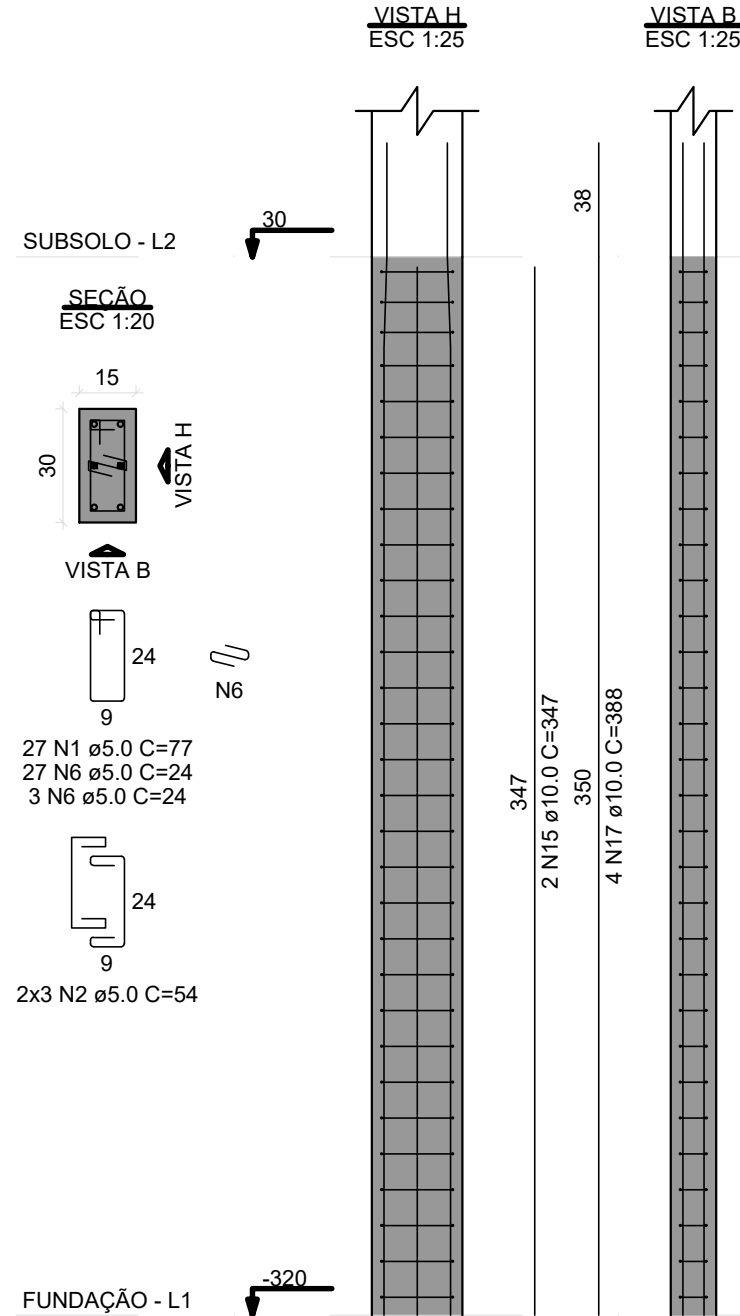


RELAÇÃO DO AÇO					
AÇO	N	DIAM (mm)	QUANT	C.UNIT (cm)	G.TOTAL (cm)
CA80	1	5.0	968	77	74382
	2	5.0	228	54	12312
	3	5.0	30	113	3390
	4	5.0	84	91	7644
	5	5.0	24	107	2568
	6	5.0	150	24	3600
	7	5.0	12	63	756
	8	5.0	30	26	780
	9	5.0	24	81	1944
	10	5.0	12	58	696
	11	5.0	27	101	2727
	12	5.0	8	68	408
	13	5.0	81	67	5427
CA50	14	5.0	18	54	972
	15	10.0	68	347	23932
	16	10.0	16	75	1200
	17	10.0	128	368	46888
	18	12.5	4	307	1228
	19	12.5	18	94	1692

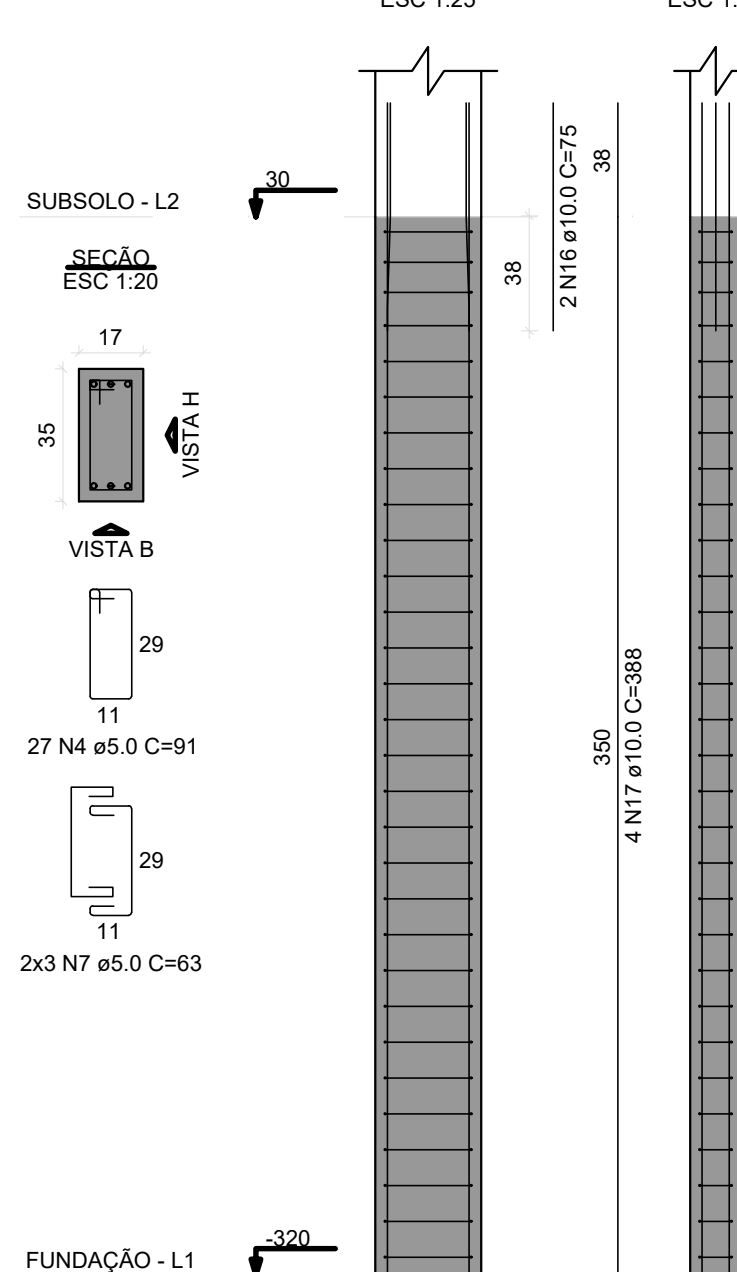
RESUMO DO AÇO			
AÇO	DIAM (mm)	C.TOTAL (m)	PESO + 10% (kg)
CA50	10.0	729.9	495
CA80	5.0	1176.1	34.8
PESO TOTAL (kg)			199.4
CA50	529.8		
CA80	199.4		

Volume de concreto (C-25) = 7.62 m³
Área de forma = 146.16 m²

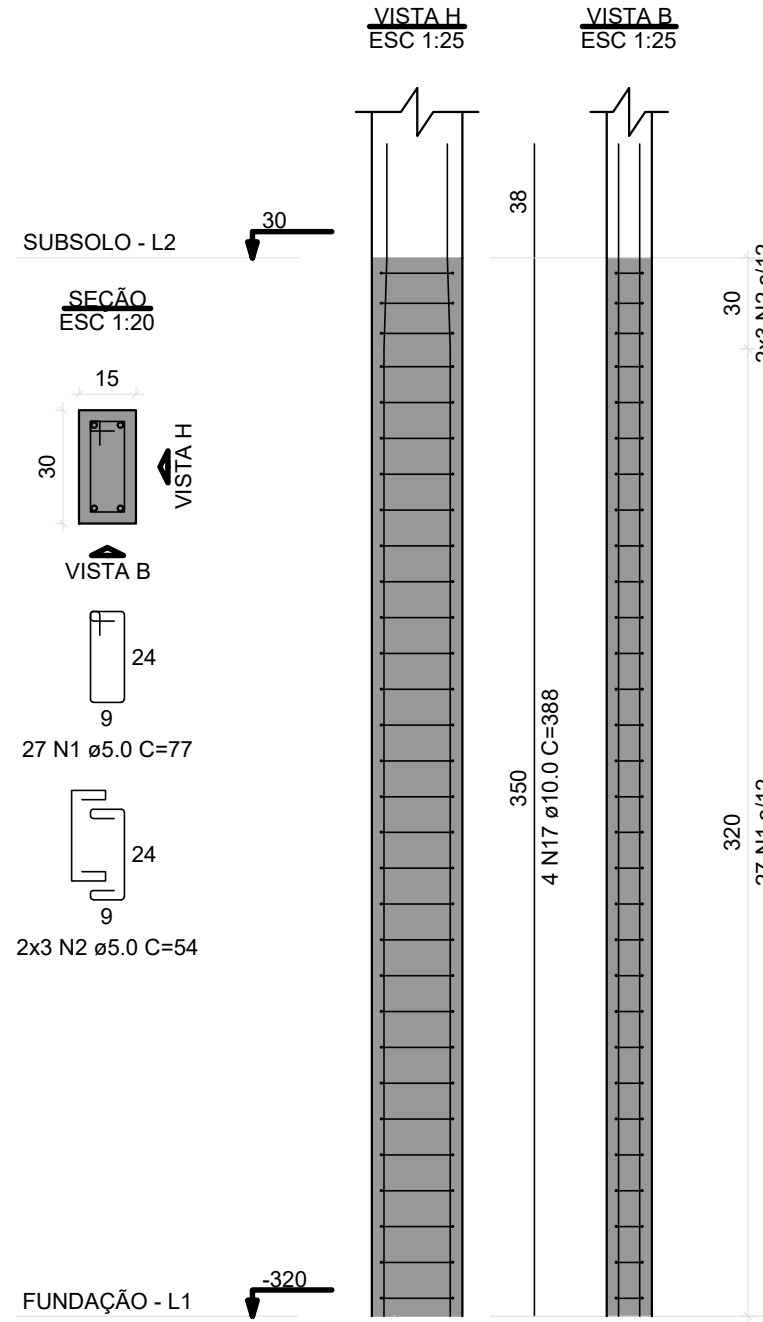
P19=P25=P26=P96



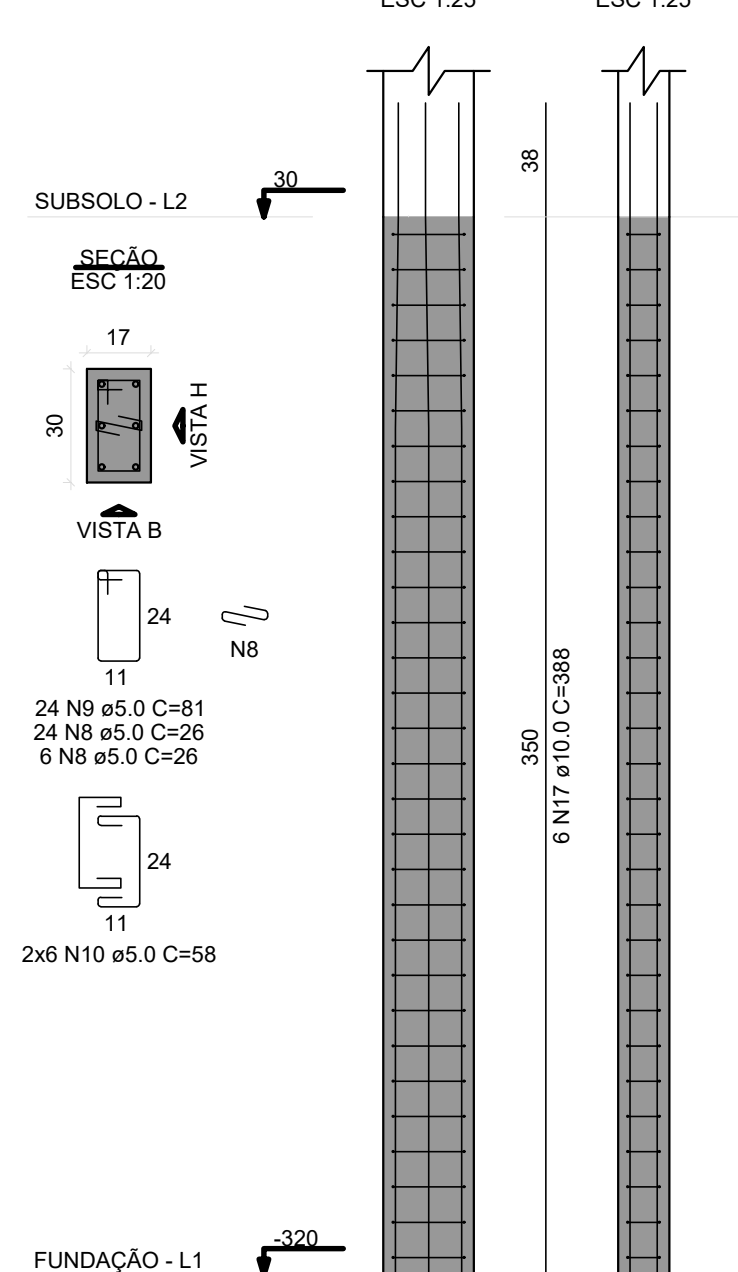
P20



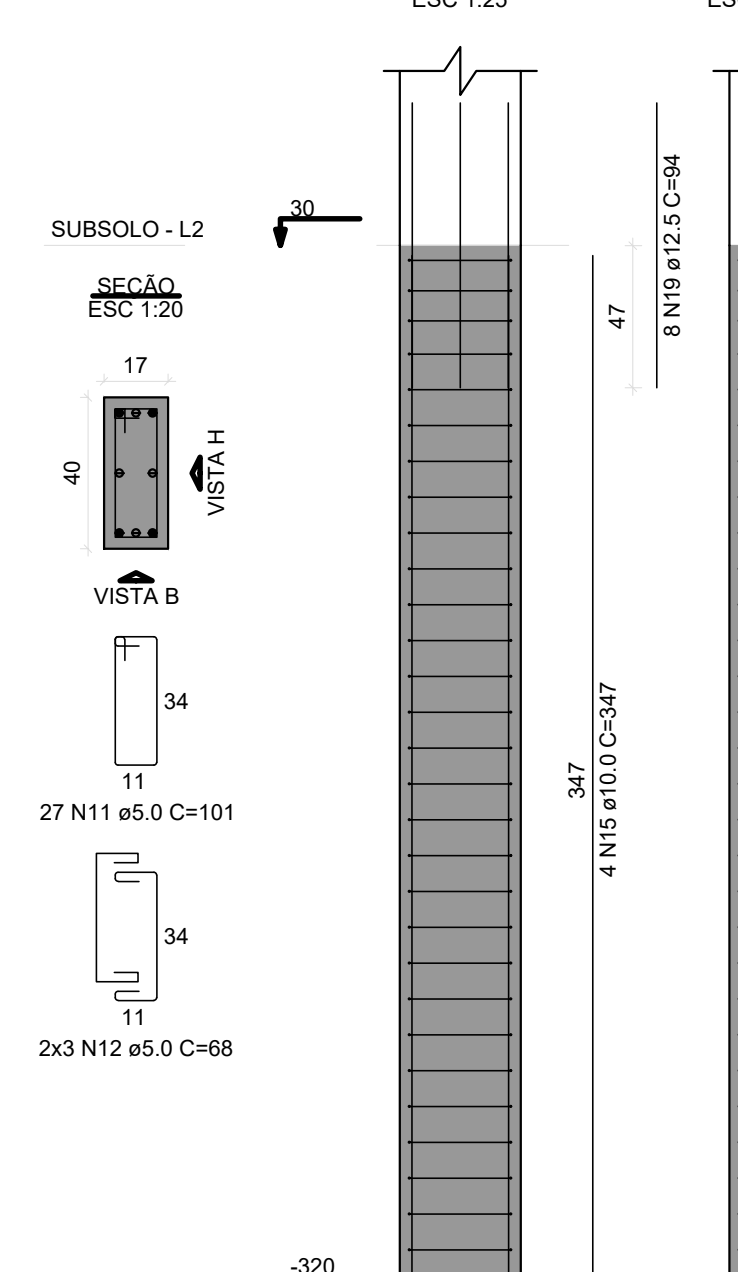
P21=P27=P29=P38=P60=
=P61=P75=P83=P97=
=P100=P101=P104



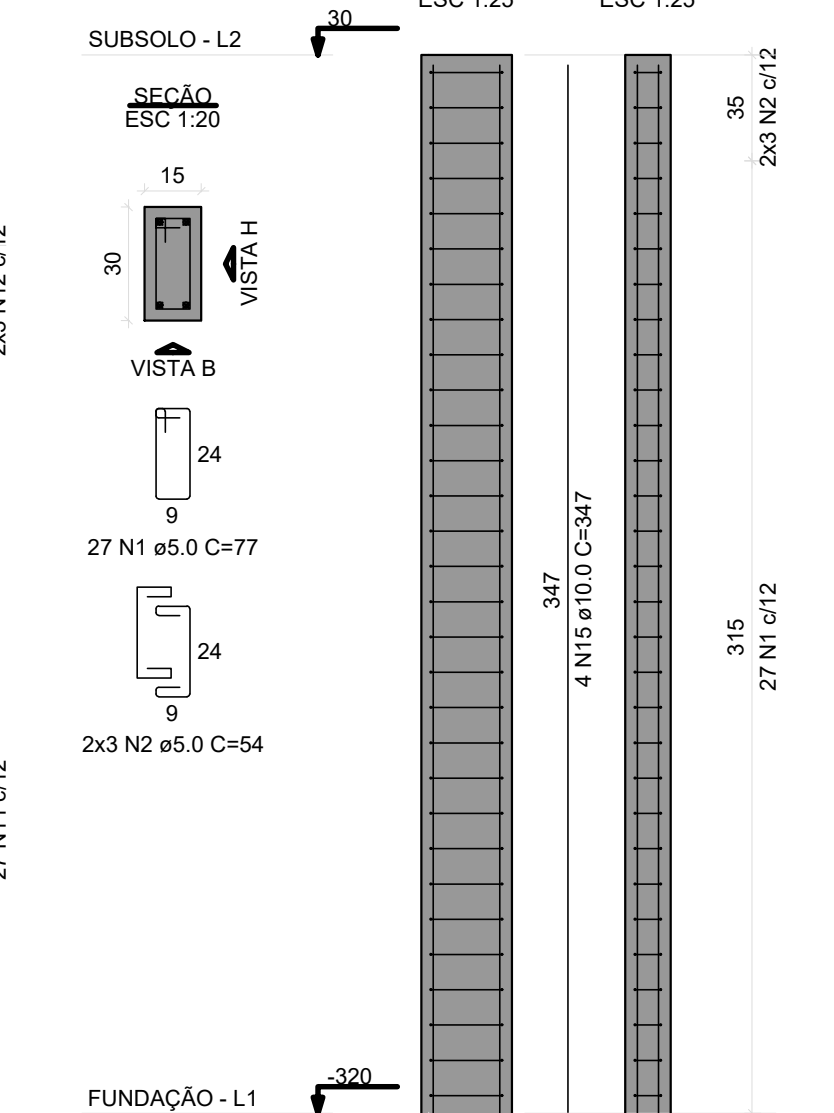
P22



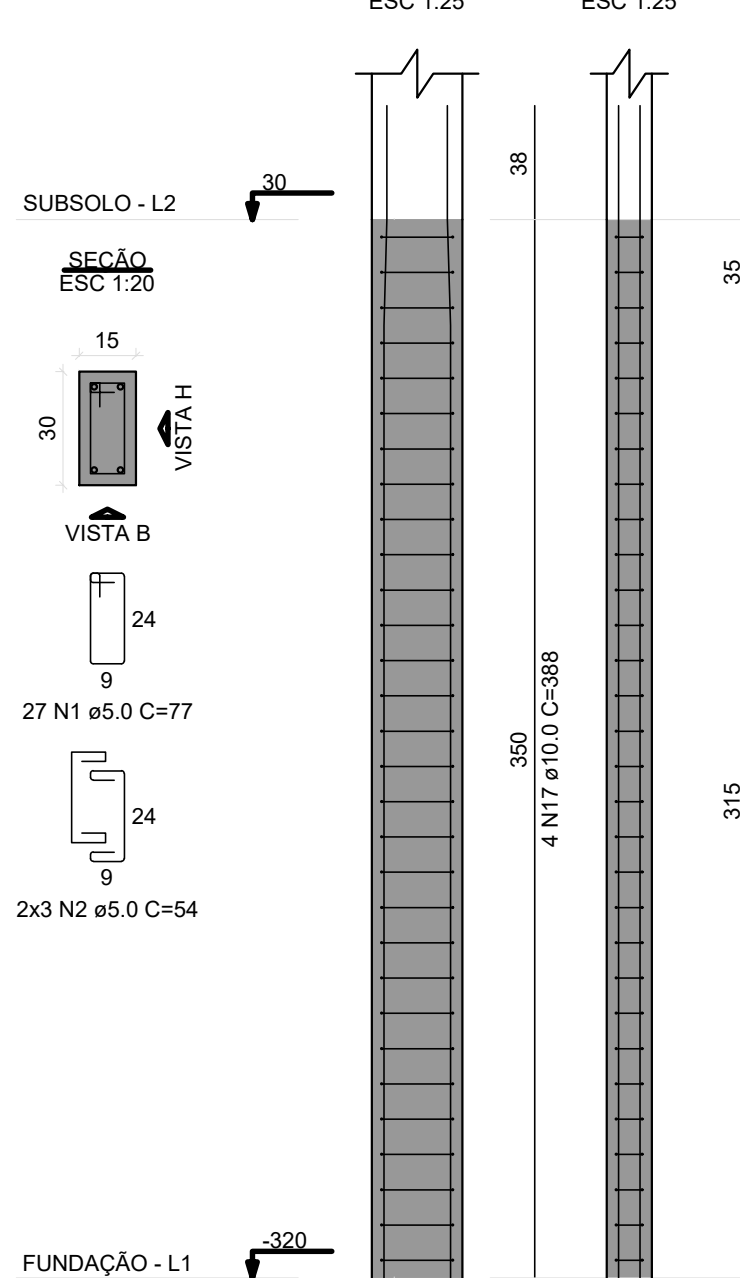
P23



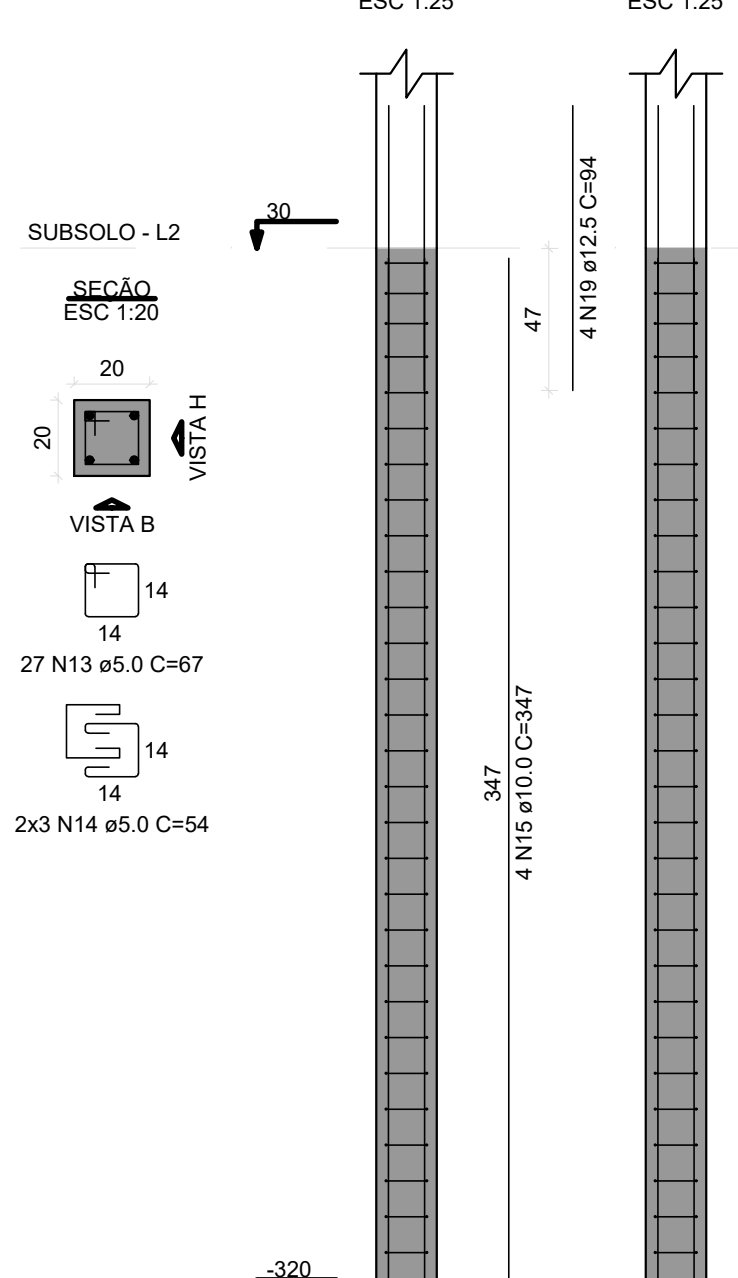
P24



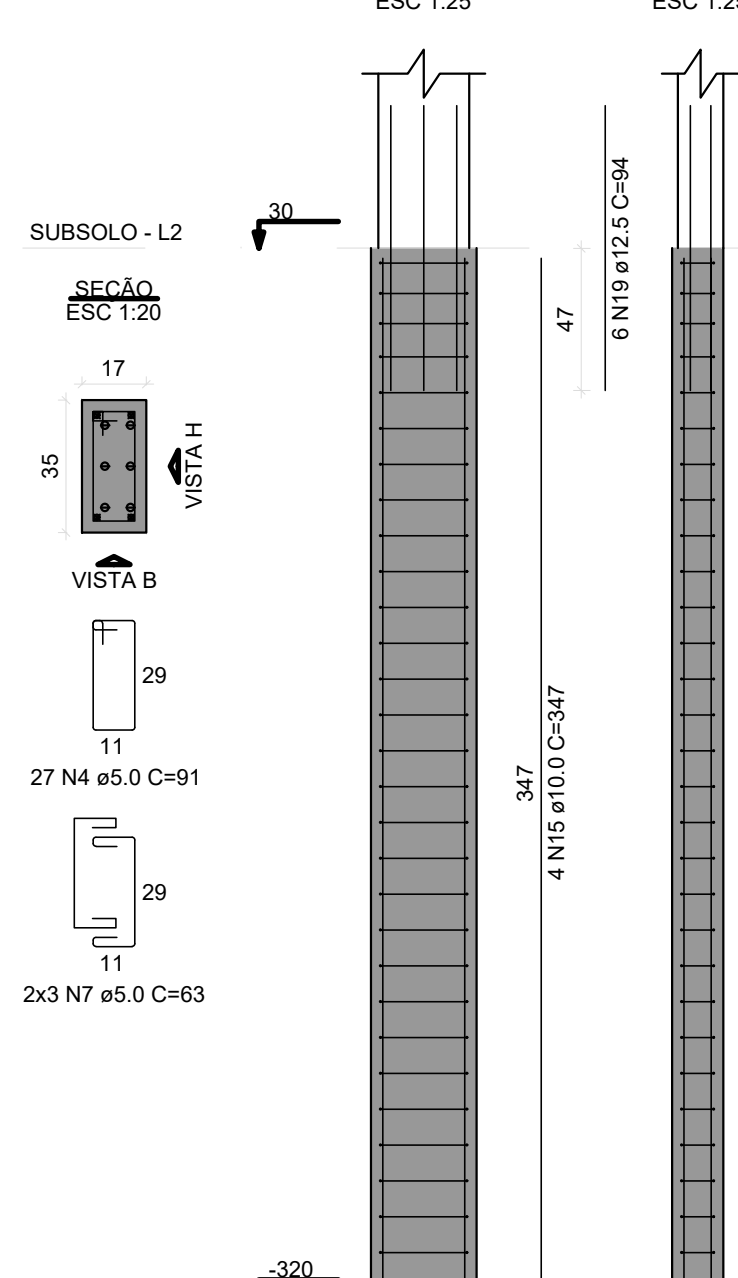
P28



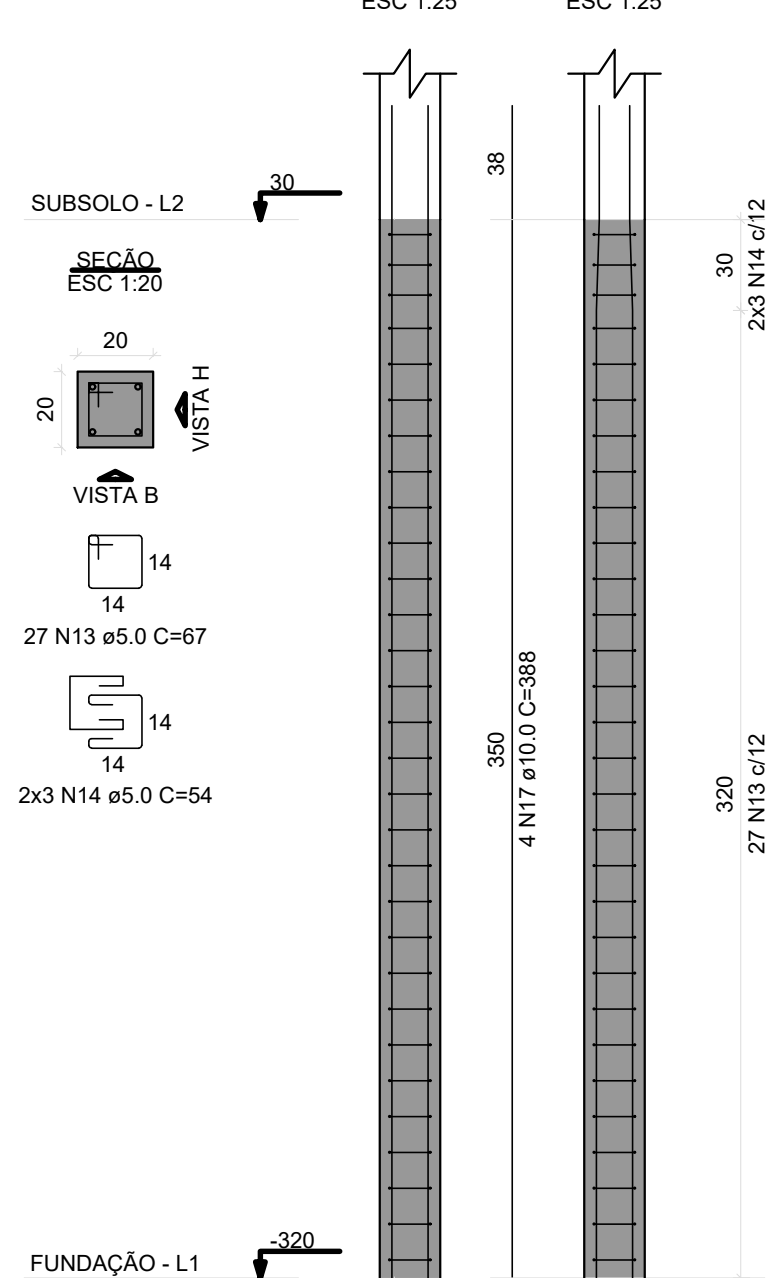
P30



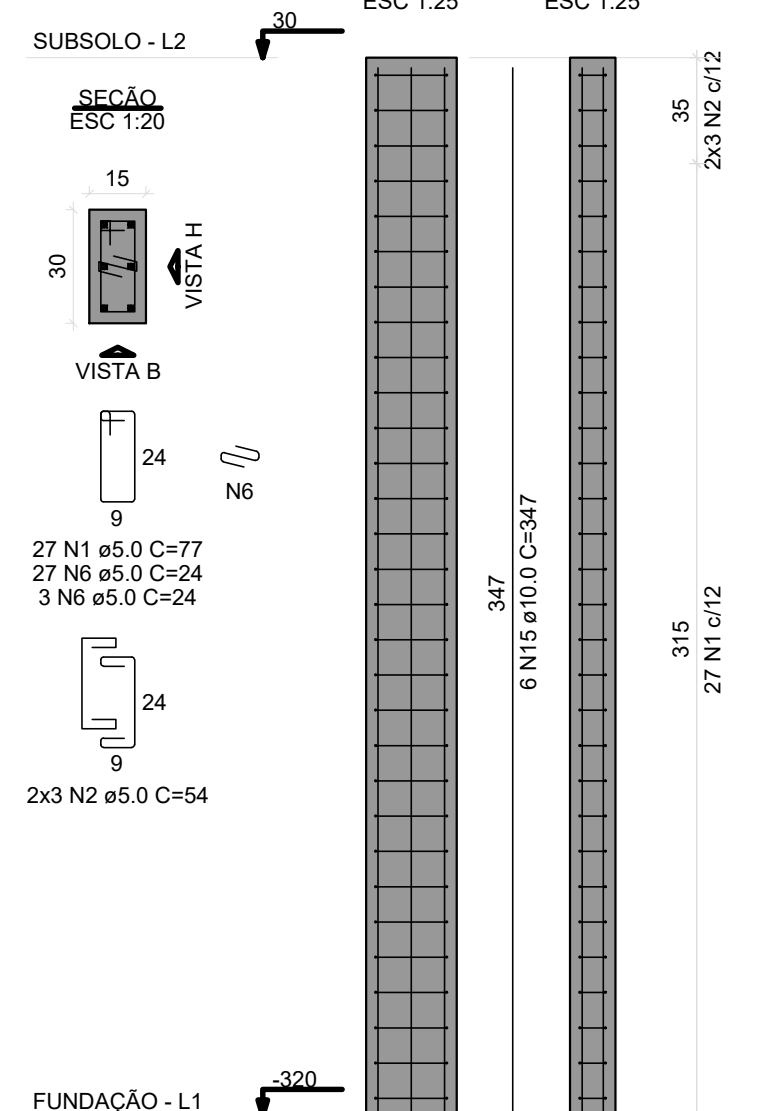
P31



P33=P34



P35



BLOCO ÁREA COMUM PRANCHAS: 212 a 295

REVISÃO	DESCRIÇÃO	REVISADO POR	DATA
REVISÃO 00	EMISSION INICIAL	WAGNER	MARÇO/2024
<div><div><div></div><div>SERGIPE GOVERNO DO ESTADO</div></div><div><div>DIRETORIA DE ARQUITETURA E EDIFICAÇÕES</div><div>FRAÇA TOBIAS BARRETO, nº 20, BAIRRO SÃO JOSÉ</div><div>CEP: 49050-220 ARACAJU/SE</div><div>TELS: (79)3216-5454 / (79)98851-9337</div></div></div>			
TIPO PROJETO ESTRUCTURAL EXECUTIVO DA CONSTRUÇÃO DO CENTRO INTEGRADO DE SEGURANÇA PÚBLICA (CISP) EM NOSSA SENHORA DA GLÓRIA/SE			Nº DA PRANCHA
ASSUNTO: BLOCO ÁREA COMUM PILARES DO SUBSOLO 01			231/348
END.: RUA ANTÔNIO JOAQUIM DE FARIAS, S/N – N. SRA DA GLÓRIA – SE			
AUTOR DO PROJETO: WAGNER DARY DA SILVA			
RESPONSÁVEL TÉCNICO: WAGNER DARY DA SULVA RN: 270771497-6			
ESCALA: INDICADO	DATA: MARÇO/2024	DESENHISTA: WAGNER DARY DA SILVA	